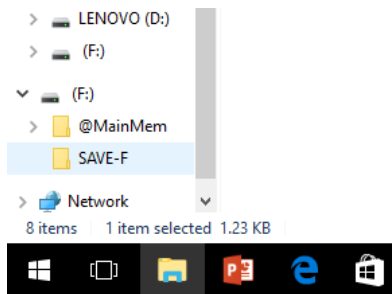
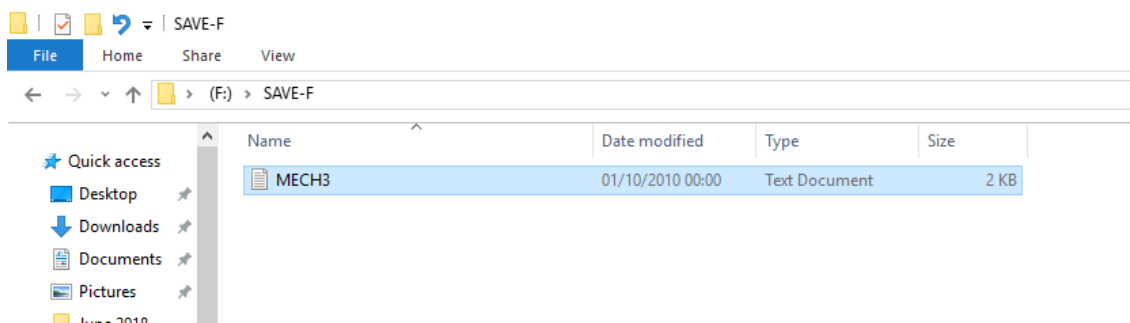


Notes on Transferring Programs from a Computer to a Calculator

1. Connect the calculator to the computer using the USB lead.
2. On the calculator select **F1 USB Flash**.
3. On the computer select and copy the “.txt” version of the file. (In this case MECH3 . txt).
4. Open the folder SAVE-F.



5. Paste the file into this folder.

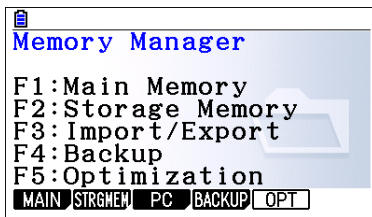


6. Eject the drive that corresponds to the calculator. Ignore any error messages and press **EXIT** on the calculator when prompted.
7. Use **Menu B** on the calculator.
8. Press **F6** and then **F4 Load**.
9. Press **F1 Open** and you will see the file that you have just transferred.
10. Press **F1 Open** and press **Exit** when prompted.
11. The program is now ready to run and pressing **F1** or **EXE** will start the program.

Notes on Using Programs with the Emulator

Make sure that you have “.txt” version of the program available on your computer.

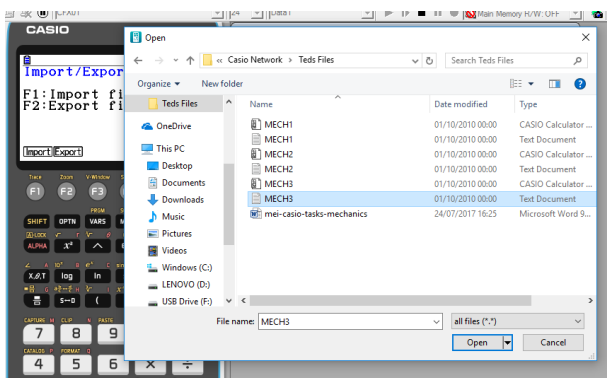
1. Use **MENU F** to open the Memory Manager screen as shown below:



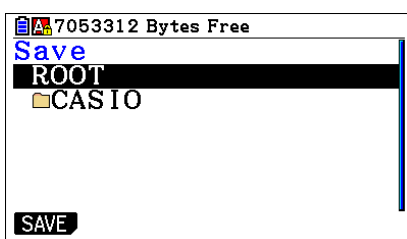
2. Select **F3: Import / Export**.



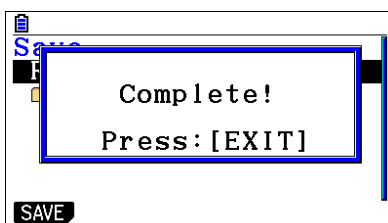
3. Select **F1: Import files** and locate the “.txt” version of the file as shown below. (You may need to select “All files”) In this case MECH3 has been selected.



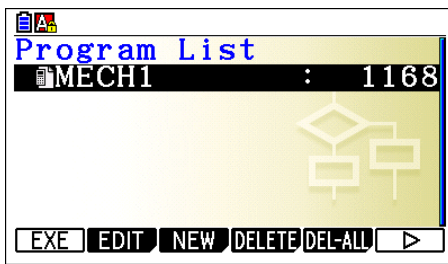
4. Click on **Open** to select this file and the screen will return to the calculator emulator.



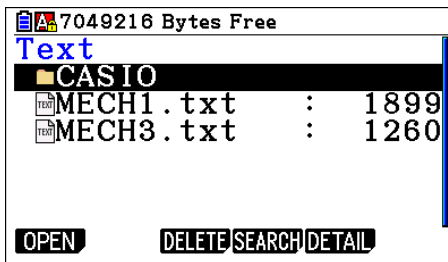
5. Select **F1** to save the file. You may wish to choose a different location in the calculator. When prompted press **EXIT**.



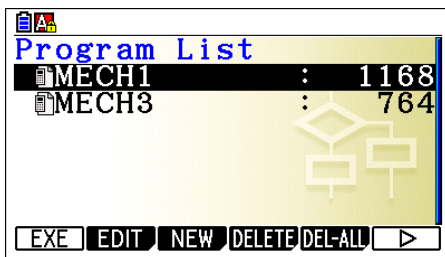
6. Use **MENU B** to open the Program List.



7. Use **F6** and then **F4** Load.



8. Select the required file (in this case MECH3 . txt) and use **F1** to open. Press **EXIT** when prompted to.



9. Now you can select the required program and press **F1** or **EXE** to start the program.