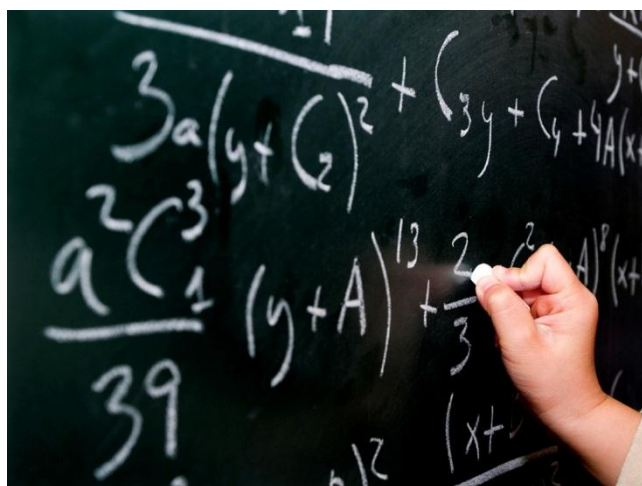


Mathematics in Education and Industry

# The Theoretical Underpinnings of A level Mathematics

A workshop focusing on Mathematics at the School/HE Interface

London Mathematical Society, Russell Square, London  
Saturday June 16 2012, 09:45 – 16:00



**This exciting CPD opportunity is for experienced teachers of A level Mathematics. The workshop is organised by Mathematics in Education and Industry in partnership with the Mathematics, Statistics and Operational Research discipline at the Higher Education Academy.**

The workshop will:

- highlight the mathematical rigour which underlies various concepts in A level Mathematics and some consequences of it;
- increase the confidence of teachers, make for more interesting teaching and ultimately be of great benefit to students;
- provide the opportunity to discuss and access information about where the mathematics taught in A level Mathematics and Further Mathematics 'goes next' at university.

Topics covered will include infinite series, limits of sequences, continuity and differentiability, integration, the foundations of trigonometry, elementary number theory, the arithmetic of irrational numbers and polynomials.

The day will be delivered by David Bedford, mathematics lecturer at Keele University and Richard Lissaman, Programme Leader of the Further Mathematics Support Programme.

### Timetable for the day:

09:45	Arrival, registration, tea and coffee
10:00	Welcome, discussion problems
10:30	Pausing for thought about number and algebra <i>Richard Lissaman</i>
11:30	Tea and coffee break
11:45	What do mathematicians actually mean by infinity? <i>David Bedford</i>
12:45	Lunch (provided)
13:30	Taking functions to the limit, calculus and trigonometry <i>Richard Lissaman</i>
14:30	Tea and coffee break
14:45	What have we created? Paradoxes in mathematics <i>David Bedford</i>
15:45	Closing plenary, feedback
16:00	Close

**The cost of this course is £50.**

**Places are limited to 30 teachers so please book early.**

To book a place at this event please e-mail Angela Town: [angela.town@mei.org.uk](mailto:angela.town@mei.org.uk)