

Maths Hubs

MEI Conference

27th June 2014

John Westwell (MEI/NCETM)

Maths
Hubs



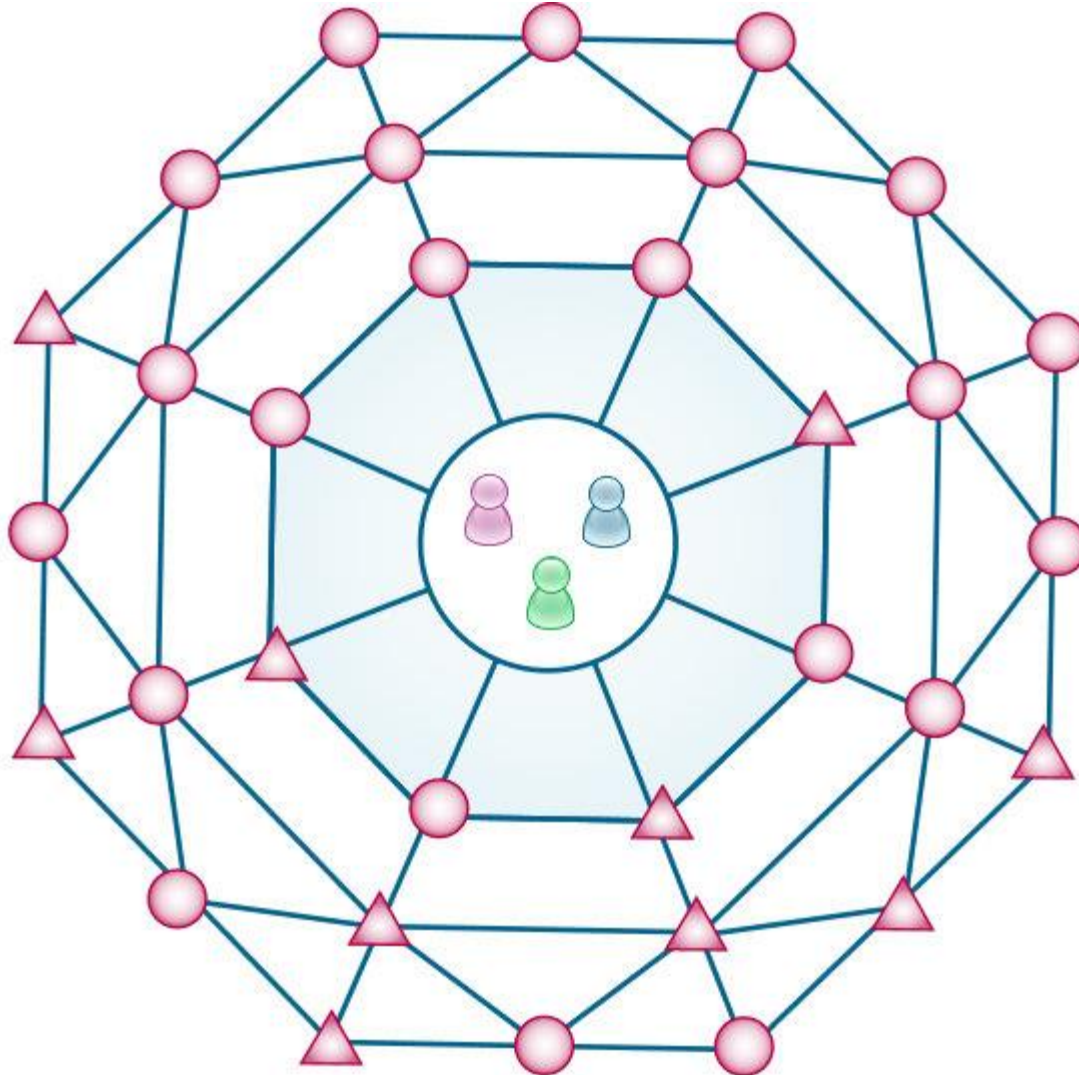
Discussion item 1






Session focus:

- What the hubs will be doing
- Who is running them and NCETM's role
- How to get involved or benefit

What do you want to find out?

Who are the Maths Hubs?



-  Maths Lead/s
-  Hub Administrator
-  Senior Leader with a strategic role
-  School
-  Other Institution

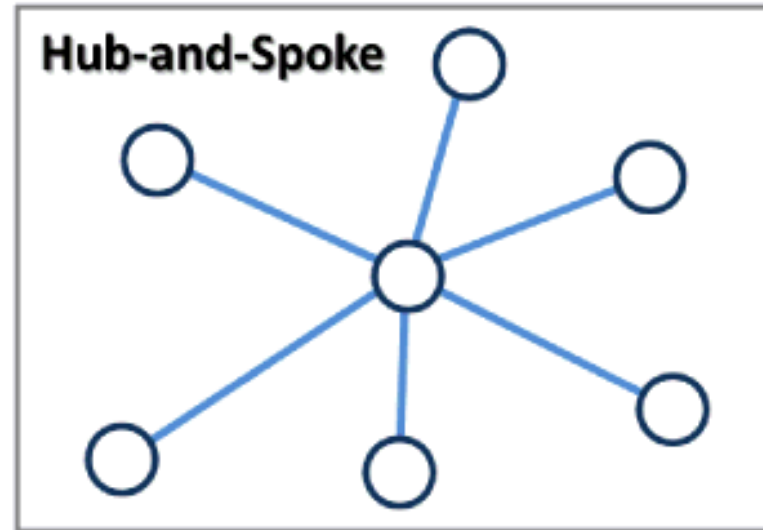
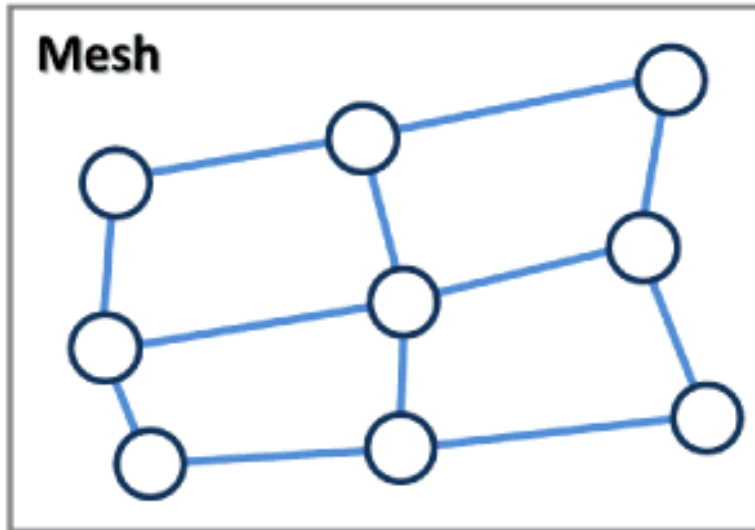
Lead School: Providing the mathematical and partnership leadership

Strategic partners: Working with the lead school to provide strategic leadership for the hubs

Operational partners: Further local leadership and specialist expertise to support whole area

Lead schools/colleges

- Initially 32 (quickly rising to 35)
- Robust selection process
- Credibility, capacity and commitment
 - Mathematics
 - Leadership
 - Partnership and networking
- Announced next week
- Starting work in September



Moving from a “Hub and spoke” network to a “Mesh” network

In a fully meshed network all the nodes are hubs

What are the Maths Hubs for?

Pupil outcomes

Resolute focus on pupils' maths outcomes:

- improved levels of achievement
- increased levels of participation
- improved attitudes to learning
- closing the gaps between groups

School/college improvement

The logo for Maths Hubs, featuring the text "Maths Hubs" in a blue sans-serif font. To the right of the text is a graphic consisting of three overlapping circles in shades of blue and teal, arranged in a triangular pattern.

Maths
Hubs

Determined support for all schools/colleges to improve:

- the teaching of mathematics
- the leadership of mathematics
- the school's mathematics curriculum

Maths hubs rationale

The logo for Maths Hubs, featuring the text "Maths Hubs" in a blue sans-serif font. To the right of the text is a graphic consisting of three overlapping circles in shades of blue and teal, arranged in a triangular pattern.

Maths
Hubs

Maths hubs will enable and will further develop:

- school-led subject system-leadership
- high impact collaboration and partnership
- innovation in teaching and teacher development
- effective use of specialist expertise and evidence

Who are Maths Hubs for?

Who are they for?

The Maths Hubs logo is located in the top right corner. It consists of the words "Maths" and "Hubs" stacked vertically in a blue, sans-serif font. To the right of the text is a graphic of three overlapping circles in shades of blue and teal.

Maths
Hubs

All schools and colleges that choose to seek support from the Maths Hub.

Maths Hubs become the “go to” source of support, expertise and collaboration for teachers and leaders.

Depending on the region, there are likely to be 600 schools/colleges in an area covered by a hub.

What will Maths Hubs be doing?

Maths Hubs – key functions



Maths
Hubs

The logo for Maths Hubs, featuring the words "Maths" and "Hubs" stacked vertically in a blue sans-serif font. To the right of the text is a graphic of three overlapping circles in shades of blue and teal.

Identify needs and agree
priorities

Ensure provision of high
quality specialist
mathematics support

Critically evaluate quality
and impact

Planning and resourcing support

Ensure provision of high quality specialist mathematics support

- Communicating existing support
- Extending an existing form of support
- Developing new forms of support
- Commissioning external organisations

Support for what?

Workforce development

- Recruitment
- Initial Teacher Training and Induction
- Professional development and school-to-school support
- Mathematics leadership development
- Mathematics system leadership

Pupil enrichment

- Work with universities
- Work with local employers

Hub activity – “Work Groups”

- Clear rationale for activity
- Well defined intended outcomes
- Local leadership supported by expert partners
- Mixed activity over time
- Value for money
- Systematic evidence collection

Teachers doing good work together that makes a difference to pupils

Shanghai Teacher Exchange

The logo for Maths Hubs, featuring the text "Maths Hubs" in a blue sans-serif font. To the right of the text is a graphic consisting of three overlapping circles in shades of blue and teal, arranged in a triangular pattern.

Maths
Hubs

The England-China Maths Education Innovation and Research Project

- Transformational impact
- Drawing on important expertise
- Generating and informed by evidence
- Local leadership but with national collaboration
- Exemplary maths education

Discussion item 2

What do you hope that Maths Hubs will be doing?

What are the needs?

What are the priorities?

What is really important?

Identification of needs/priorities

Identify needs and agree priorities

- Maths Hub knowledge
- Direct requests
- Pro-active survey
- Referrals
- National evidence

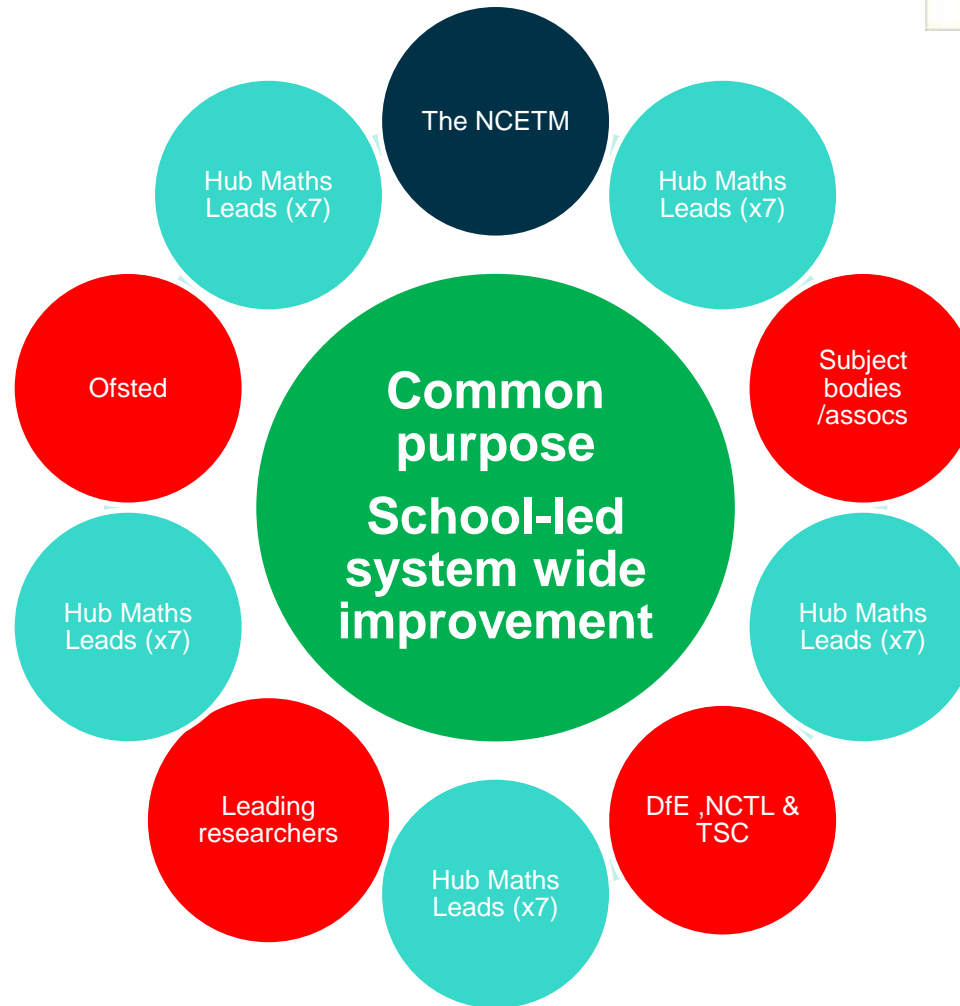
Evaluating quality and impact

Critically evaluate quality and impact

- All support and collaboration with standard evidence collection
- Immediate, medium-term and long-term feedback collected
- More detailed evaluative research used to test innovations

National network of Maths Hubs

Maths
Hubs



How can we get engaged with a Maths Hub?

Engaging by....

- Contacting the Maths Hub
- Offering to be a partner
- Communicating a need
- Suggesting a collaborative way of working
- Participating in a relevant hub work group

Discussion item 3

How would you like to get engaged?

Any further questions?

• mathshubs@ncetm.org.uk

Maths
Hubs

